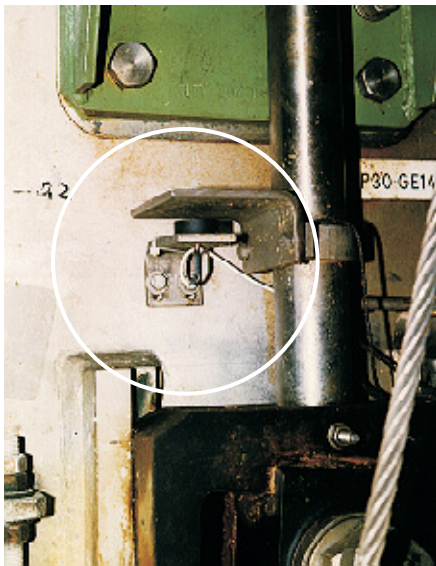


## Lip Gap Measuring in Paper Manufacture

In paper manufacture the lip gap at the headbox determines the thickness of the paper. Paper machines usually have a lip width between 4 and 6 metres. The measuring task is a constantly monitoring the gap between the upper and lower lip as a quality relevant variable.

To manage this application a non-contact eddy current displacement sensor is fitted either to one or better to both sides. A steel or aluminium target plate fitted opposite the sensor serves as a measuring target.



### Technical data

- measuring ranges: 0 - 15 (40 mm)
- accuracy: 50  $\mu\text{m}$
- excellent long term and temperature stability

### Ambient conditions

- harsh industrial environment with water and other aggressive liquids

### Configuration

DT315-SM-I single channel electronics with power supply

U22 sensor measuring range 22 mm

C6 sensor interconnecting cable 6 m

BC-U22-C6 sensor-matching board

### Alternative:

U40 sensor measuring range 40 mm

U15 sensor measuring range 15 mm

C9 sensor interconnecting cable 9 m

C12 sensor interconnecting cable 12 m

